



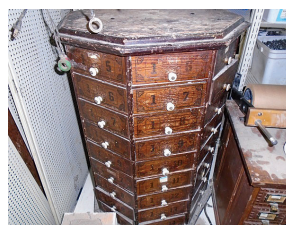
CVA Inventory Reduction



AUCTION

Saturday, July 25, 2015 • 9 A.M.

Central Valley Ag, 203 Oak St., Humphrey, Nebr., 68642



FARM EQUIPMENT

- 6-Ton Stainless Steel Dry Fertilizer Pull-Type Spreader, 540 PTO, ground driven
- 6-Ton Dry Fertilizer Pull-Type Spreader, 540 PTO, chain driven
- (2) DMI 4300 Pull-Type NH3 Tool Bar, 13-knife 30" w/DMI closing discs
- DMI 4100 11 Pull-Type Tool Bar, 11-knife 30" w/DMI closing discs
- Blu-Jet Pull-Type NH3 Applicator, 11-knife 30", Yetter closing discs
- (2) Blu-Jet 9-Knife 3-Pt. NH3 Applicators
- 806 Diesel Tractor, 18.4-38 rear tires, motor issues
- Tool Bar Hitch
- NH3 Tank Tongue
- (2) 2" Electric Pumps & Meters
- Parker Single Axle Weigh Wagon w/18-h.p. Van Guard motor, 7"x8' auger, takes a 2 5/16" ball
- Misc. Chemical Shuttles & Cages w/and without pumps & meters
- Set of Forklift Forks
- 750-Gal. Liquid Tank at running gear w/Briggs & Stratton motor, tandem axle, tank may leak
- (2) Poly 100-Gallon Rectangular Tanks
- (5) 1,000-Gallon NH3 Tanks & Running Gears
- 300-Gal. Gravity Flow Gas Barrel w/stand
- Poly "Top Tank" Water Tank
- Grain Sifter/Cleaner
- Screw In Aeration Fans, approx. 20
- 20" Electric Bin Fan
- 100-Gallon Fuel Tank w/pump nozzle
- New Hydraulic Cylinder
- New Hydraulic Hoses
- (20) Boxes 14 1/2 Gauge Range Master Baling Wire, 6,500 length
- Various Bin Fans
- R&R Undercar Belt Conveyer, 3-phase 7.5-h.p. electric motor
- Pioneer Parkrimp Hydraulic End Splicer
- Various Pulleys
- Various Wheel Hubs
- Truck Air Hoses
- Set of Walking Tandems

HARDWARE STORE SUPPLIES

- Multiple Racks of Metal Shelves
- Multiple Boxes of New Bolts
- Scale Head
- Older Insulation Blower
- (6) Sheets Plywood, new, 4'x8'x1/4"
- Shelves
- Numerous Shop Organizers
- Numerous Bolt Bins
- Assortment of Hardware Store Hardware: Screws, Bolts, Rivets, Washers, Etc.
- Large Assortment of Specialty Hardware
- Paint Shaker
- 600# Feed Scale on wheels
- Large Assortment of Brand New Nails
- Large Assortment of Sprayer Fittings
- Banjo Fittings
- Assortment of New Bolts, Nuts & Washers
- Many Boxes of Furnace Filters
- Key Machine & Key Station w/ many blank keys

CONSTRUCTION SUPPLIES

- Treks Lumber, 4x6 posts, other Treks lumber
- Other Various Lumber
- (2) Bunks of Misc. Vinyl Siding
- (15) Pallets of Various Architectural Shingles
- (20) Bunks of SPF Lumber Various Lengths, 2x4, 2x6
- Misc. Sheets of Tin
- (15) Rolls of 15# Felt Paper for roofing
- DeWalt Commercial Radial Arm Saw w/stand
- Assortments of Lumber
- Ridgid 300 Pipe Threader, complete set w/stand
- Bin Full of Shovel Handles

SERVICE TRUCK

1979 F-350 4-Spd. Dually Service Truck, gas, ladder rack & spotlights, air compressor w/ air storage tank, motor good, truck has fuel leak on the carburetor, shows 72,827 miles

FARM TRUCKS

- 1978 International Loadstar 700 Grain Truck, dual wheeled single axle, 5-spd. trans., 18' box w/ hoist, 128,000 miles unverifiable, Model 1800, D0532HHB39924
- 1982 International Model 1954 Fertilizer Truck, 2,000-gal. SS tank, single axle, trans. issues, runs good, 359231

TRAILERS

- 7.5'x15' Top Deck Tandem Axle Trailer, wagon hitch, homemade, no title
- 12' Homemade Car Trailer, tandem axle

ADJUSTABLE 5TH WHEEL TRUCK PLATE

Adjustable 5th Wheel Truck Plate

TIRES & RIMS

- Numerous Misc. Implement Tires & Rims
- Brand New Implement Rims
- (6) 295/75 22.5 Truck Tires

FARM SUPPLIES

- Pallet of Boxes of 9,000' 0-130 Bale Twine

FENCING SUPPLIES

- (61) Brand New 8' Fence Braces
- Brand New 6' T-Posts

OWNERS:



63088 Levi Road, Glenwood, Iowa, 51534

Al Hughes: 402-672-3621

Brent Reichmuth CVA Rep

1-402-750-8116

Office: 712-527-3114

www.alhughesauction.com

AUCTIONEER'S NOTE: Large auction with a possibility of 2 rings, so please be prepared. Loaders available day of sale.

SHOP TOOLS

- Start-All Power Unit
- Miller Roughneck 1E Welder, AD712457
- Commercial Grade Shop Grinder
- Cherry Picker
- Engine Stand
- Red Metal Shop Table
- Number Elevator Cups-Organizer Trays, bundled in bunches of 8 or 10
- Assortment of New Elevator Cups (25+) Commercial Electric Motors
- Various Baldwin Filters: oil, air, fuel
- LB White Propane Heater

ANTIQUES & COLLECTIBLES

- Vintage Pictures & Maps of Humphrey, Nebr. & Platte County
- Multiple Vintage COOP Advertising Signs
- Antique Grain Scoop w/metal wheels
- Unleaded Gas Pump
- (2) Antique Metal Wheeled Lumberyard Carts, 10'x42"
- Model T-Rims & Tires
- Vintage Yardsticks
- Antique Organizer
- Antique Moisture Tester
- Antique/Vintage Burroughs Adding Machine
- Vintage Battery Chargers

OFFICE EQUIPMENT

- File Cabinets
- Office Desks
- (2) Time Card Clocks

MOBILITY DIPPER

- Mobility Dipper 4x4, blown motor (dsl.), bucket & pallet forks

DOORS & WINDOWS

- (1) 36" 278 Storm Door
- (1) 30" Oak Bifold Stained
- (1) 36" 6-Panel Steel Door
- (1) 32" Steel Door
- (1) 40x63" Vinyl Single Hung
- (1) 27 1/2 x 62 1/2" Vinyl Single Hung
- (1) 72x48" Vinyl Slider
- (1) 48x48" Casement Kolbe & Kolbe
- Small Piece of Formica
- (1) 24x17 1/4" Vinyl Slider
- (3) 36" Birch Doors
- (1) 36" Oak S6 Door
- (2) 36" Steel Doors
- (1) 28x39" Aluminum Combination Window
- (1) 28 1/2 x 35" Aluminum Combination Window
- (1) 24x30" Aluminum Combination Window
- (2) 30x59" Aluminum Combination Windows
- (1) 48x42" Vinyl Window
- (1) 36x36" Vinyl Stationary Window
- (1) 36" Door Display
- (1) 36" 6-Panel Door
- (2) Anderson Door Panels
- (1) 36" Ag Door
- (1) 36" Exterior Frame
- (1) 36" Solid Core Door
- (1) 32" Prefinished Interior Door
- (1) 36" Oak 6-Panel Door
- (1) 32x82" Steel Door w/22x64 light
- (1) 4x8 Stucco Siding
- (1) 48" Oak Bifold Stained
- (1) 60" Oak Bifold Stained
- (1) 36" Solid Core Oak Door
- (1) 36" Oak 6-Panel
- (1) 48" Steel Door
- (1) 32" S6 Prehung Exterior Door
- (1) 32" Exterior Door Unit w/glass
- (6) Garage Door Panels

MISCELLANEOUS

- (50) Good 3'x4' Pallets
- Parking Lot Drag
- (2) Spotlights
- Popcorn Maker



AUCTION SERVICE

TERMS: Cash or check day of sale with proper ID. Nothing removed until settled for. Announcements day of sale take precedence over all previously printed material. Not responsible for accidents. Not responsible for items left on the premises after sale.