

RETIREMENT FARM EQUIPMENT AUCTION

Plus Over 50 Years of Collecting Primitives & Antiques

Saturday, March 4, 2017 • 9:00 a.m.

One Day Sale • Farm Equipment Sells at Noon

Location of Auction: 21929 221st South, Glenwood/Pacific Junction, Iowa

Directions: 1.5 miles south of Highway 34 on 221st Street (Al Hughes Auction Facility)



ANTIQUE WRENCHES, over 100 wrenches of Ford, John Deere, International & Ford Son

VINTAGE FRUIT JARS, 40 highly collectible misc. sizes, 11 1/2 pint fruit jars (clear), 20 pint fruit jars (clear), 5 freezer jars (clear), 50 quart fruit jars (blue)1, 40—1/2-gal. Ball jars (blue)

POTTERY, 25 assorted vintage pottery (includes Red Wing, Hull, McCoy, Fenton)

GONE WITH THE WIND LAMP, ruby in color, very nice!

OIL LAMPS, 15 oil lamps in excellent condition

NORITAKE PLACE SETTING FOR 12, Normandy pattern, gold rimmed

LIGHTNING ROD BALLS

WEATHER VANE GOLDEN CHICKEN

WEATHER VANE ARROWS

3 JAPANESE FISHING FLOATS

GLASS MINNOW TRAP

DAZEY BUTTON CHURN

JD 4-DINNER PLATE SET

LICENSE PLATES, over 100 vintage plates, some motorcycle plates

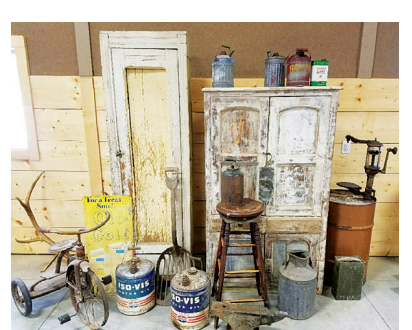
BELT BUCKLES, 40 misc. buckels (a few Hesston's)

BULLET PENCILS, fruit jar full of bullet pencils

1971 NEBRASKA CHAMPIONSHIP FOOTBALL SIGNED BY TEAM & COACHES

BIRCH BARK CANOES, 5 from 6" to 4'

RAZOR, 7 straps & many straight razors



U.S. ITEMS, 7 U.S. gas cans red & dark, U.S. Army vintage bugle, helmet, mess kit & parachute

SCOPE, red head spotting scope, complete set

TRAPS, 1 U.S. marked trap wolf trap, 10-12 traps wolf traps

ANIMAL RUGS, black bear, coyote

TABLE W/ 6 CHAIRS, 1920s vintage table with pull out leaves on sided

1876 U.S. FLAG, 38 stars, 4'x12' (great condition)

COUNTER CHECKS, 3 albums full from most banks in the state of Iowa, A-Z

CROCKS, 60 plus (some good & some w/cracks)

SLED, 12' runner sled (made by local blacksmith)

ANTLERS, European typical mount, many deer antlers

SADDLE, Bronco Billy Cutter saddle (16" seat rough out, great condition)

EQUINE MISC., headstill, horse blanket, cinch, etc.

TRACTORS

2005 JD 8120 MFWD, 2,135 hrs., 8 front weights, 480/80 R42 rears w/duals, 380/80 R30, 3 remotes, JD quick hitch, buddy seat, extremely clean, one owner, PIN# RWSG074026890
1979 JD 4640, one owner, triple outlet, newer 50 or 55 Series motor with less than 3,000 hrs. on the new motor, quad range, quick hitch, another really clean tractor, SER# 4640H020998R

1962 JD 3010 Diesel, wide front, slab weights, straight tin, decent paint, shows 3148 hrs., nice tractor, SER# 25823
1949 JD B, 6-V, POWR-TROL, Roll-O-Matic, clean, good metal, good paint, 3-pt. will be sold separately, SER# 231998
1953 Super M, F-42041 J, 12-V, live hydraulic, whl. whts., NF, 13.6-38 new, 6.00-16 decent paint, sheet metal, runs good

TILLAGE

2005 Case RMX 340, 25', 9" spacing, hyd. self leveling, #JFH0027234 good condition
Landoll 2510-5-30, 3-pt., inline ripper, 5-knife, less than 800 acres used, SER# 25J1301021, like new
JD 726 Field Conditioner, 26', hydraulic front gang, walking tandems, 3 piece harrow, 7.5 spacing, 36 shovels, SER# N0026X000748

MISC. FARM EQUIPMENT

Wetherell 3-Pt. Rear Mount 8R30" 9' Heavy-Duty Rear 3-Pt. Blade, Picker Manufacturing
200-Gallon Propane Tank
Ferguson 2R Adj. Cultivator
Ferguson Lister Planter, 3-pt., 2R
3-Pt. Bale Carrier
Ferguson 14" 2R Plow, nice
1948 Henry Hydraulic Scraper, 1-yd., one owner
Ferguson Lister, 3-pt., 2R, without boxes
1964 JD 110 Mower, SN 10217
1964 JD Mower, Sn 12424 (parts only)
3-Pt. 10' Disk
JD Front & Slab Weights
JD Horse-Drawn Lister
JD 3-Pt. (fits "B")
JD Hydraulic Cylinders



STOCK TRAILER
2010 Featherlite 6.5'x16' Aluminum Bumper Pull, 2-5/16 ball, extremely clean



WAGONS
2 Parker 4000 Series Gravity, Parker gears, good 16.5-16.1 tires, telescoping tongues, dual spouts
2 Lundell 300-Bushel Gravity Wagons
2 Bush Hog 8'x12', steel box & floor
Westendorf 12-T Running Gears



PLANTER
2002 Kinze 3600 8R Split Planter, monitor, 38" row w/interplant, Yetter openers, no welds, one owner, nice planter

AUGERS
Newer Westfield MK100-61, 10", dual intake swing hopper, SER# 216812
Older Westfield MK100-61, 10" single intake swing hopper

AUCTIONEER'S NOTE: This unique retirement auction offers a good line of used well maintained farm equipment and a collection of antiques & primitives that are museum quality. This auction will take most of the day. Call the office if you need hotel accommodations. Thank you in advance.

SELLERS: SHERRILL & CHRISTINE DASHNER



Al Hughes: 402-672-3621
Mike Randeris: 402-680-8327
Office: 712-527-3114

TERMS: All forms of payment must be confirmed prior to equipment removal. Checks day of sale must be accompanied by an irrevocable bank letter of credit. All equipment will be sold "as is, where is" condition. Announcements day of sale will take precedence over all printed advertising. Not responsible for accidents.

www.alhughesauction.com