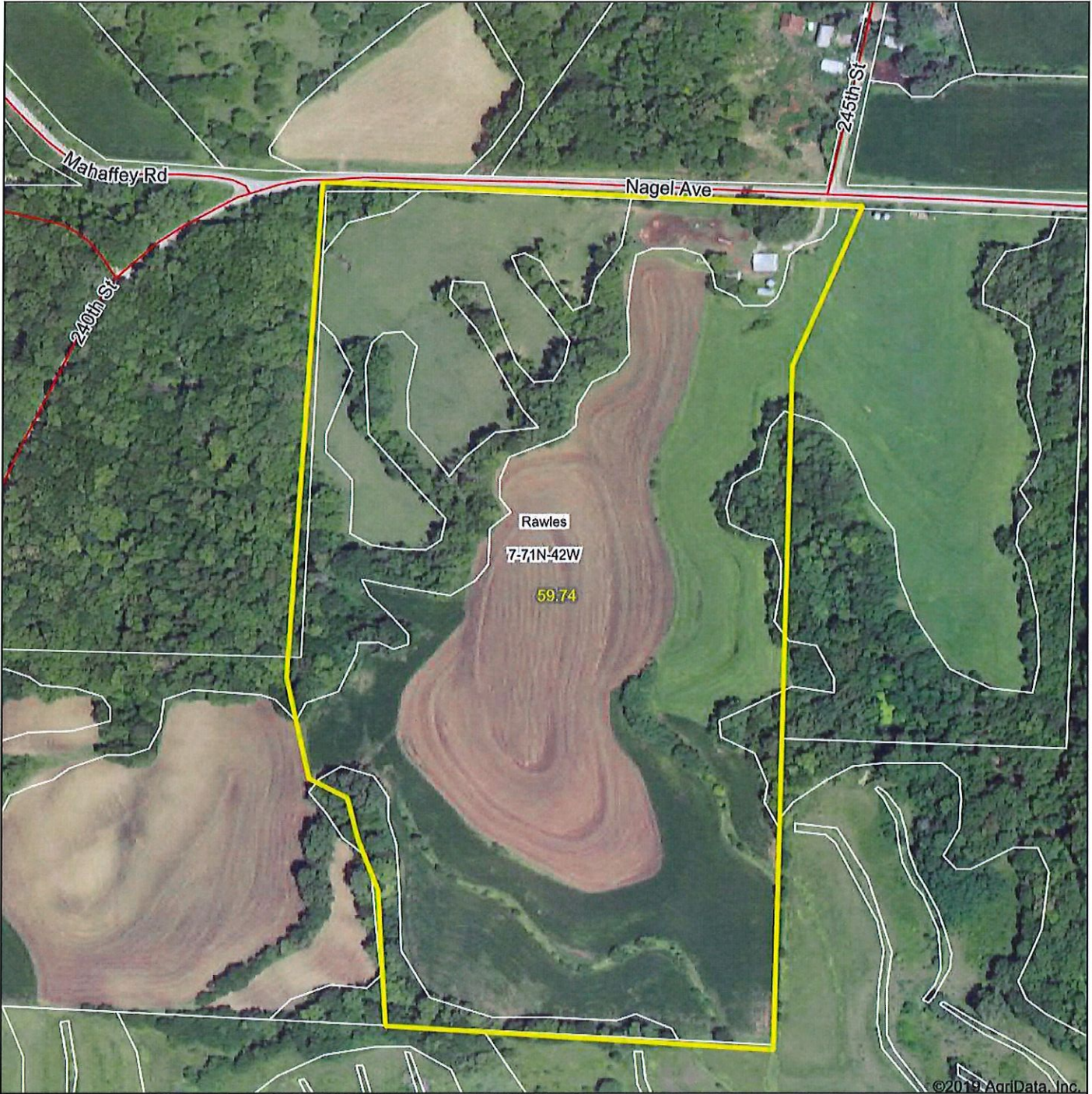


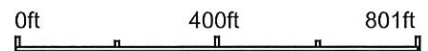
59.74 Acres
Tract 1

Aerial Map



©2019 AgriData, Inc.

Map Center: 40° 58' 3.08, -95° 43' 15.68



7-71N-42W
Mills County
Iowa



1/2/2020

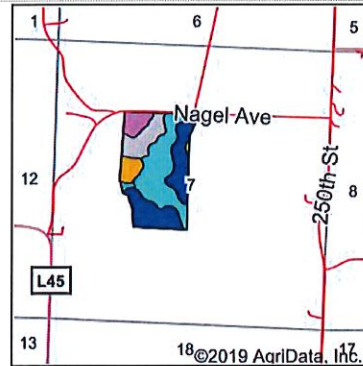
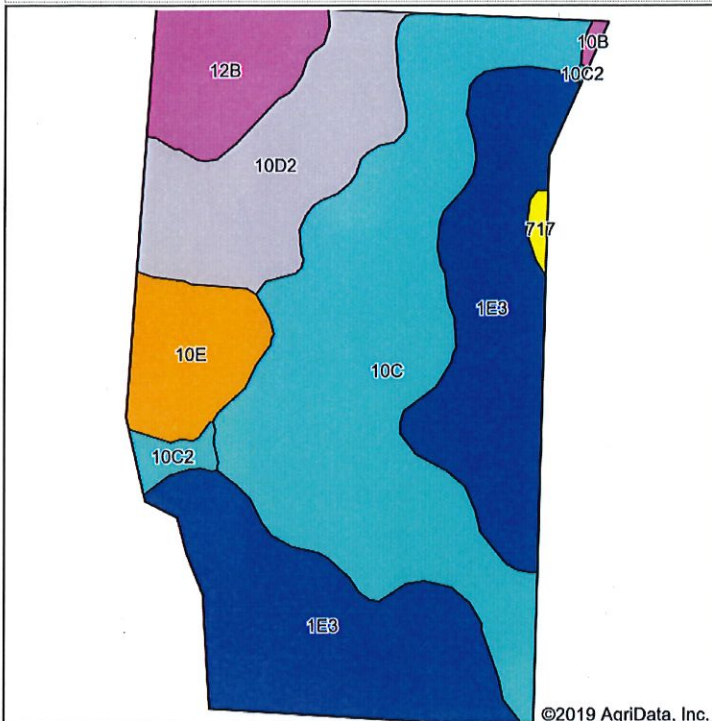
Maps Provided By

 CUSTOMIZED ONLINE MAPPING
 © AgriData, Inc. 2019 www.AgriDataInc.com

Field borders provided by Farm Service Agency as of 5/21/2008.

Tract 1

Soils Map



State: Iowa
 County: Mills
 Location: 7-71N-42W
 Township: Rawles
 Acres: 59.74
 Date: 1/2/2020



Soils data provided by USDA and NRCS.

Area Symbol: IA129, Soil Area Version: 30

Code	Soil Description	Acres	Percent of field	CSR2 Legend	Non-Irr Class *c	Irr Class *c	CSR2**	CSR	Alfalfa hay	Caucasian bluestem	Common bermudagrass	Orchardgrass red clover	Tall fescue	Warm season grasses	*n NCCPI Overall	*n NCCPI Corn	*n NCCPI Small Grains	*n NCCPI Soybeans
10C	Monona silt loam, 5 to 9 percent slopes	21.44	35.9%		IIIe		89	65							89	89	70	87
1E3	Ida silt loam, 14 to 20 percent slopes, severely eroded	20.42	34.2%		IVe		18	30							43	40	21	43
10D2	Monona silt loam, 9 to 14 percent slopes, eroded	8.41	14.1%		IIIe		60	53							71	71	52	67
12B	Napier silt loam, 2 to 5 percent slopes	4.42	7.4%		Ile		93	77							87	87	69	85
10E	Monona silt loam, 14 to 20 percent slopes	3.91	6.5%		IVe		48	45							80	80	60	74

Soils data provided by USDA and NRCS.

Tract 1



Code	Soil Description	Acres	Percent of field	CSR2 Legend	Non-Irr Class *c	Irr Class *c	CSR2**	CSR	Alfalfa hay	Caucasian bluestem	Common bermudagrass	Orchardgrass red clover	Tall fescue	Warm season grasses	*n NCCPI Overall	*n NCCPI Corn	*n NCCPI Small Grains	*n NCCPI Soybeans
10C2	Monona silt loam, 5 to 9 percent slopes, eroded	0.73	1.2%		IIIe		86	63							74	74	54	71
717	Napier-Gullied land complex, 2 to 10 percent slopes	0.27	0.5%		IIIe	IVe	55	5							10	6	0	6
10B	Monona silt loam, 2 to 5 percent slopes	0.14	0.2%		Ile	IIIe	95	80	7	8	7	7	7	8	90	90	71	88
Weighted Average							58.1	50.7	*-	*-	*-	*-	*-	*-	*n 69.5	*n 68.4	*n 49.5	*n 67.6

**IA has updated the CSR values for each county to CSR2.
 *n: The aggregation method is "Weighted Average using major components"
 *c: Using Capabilities Class Dominant Condition Aggregation Method