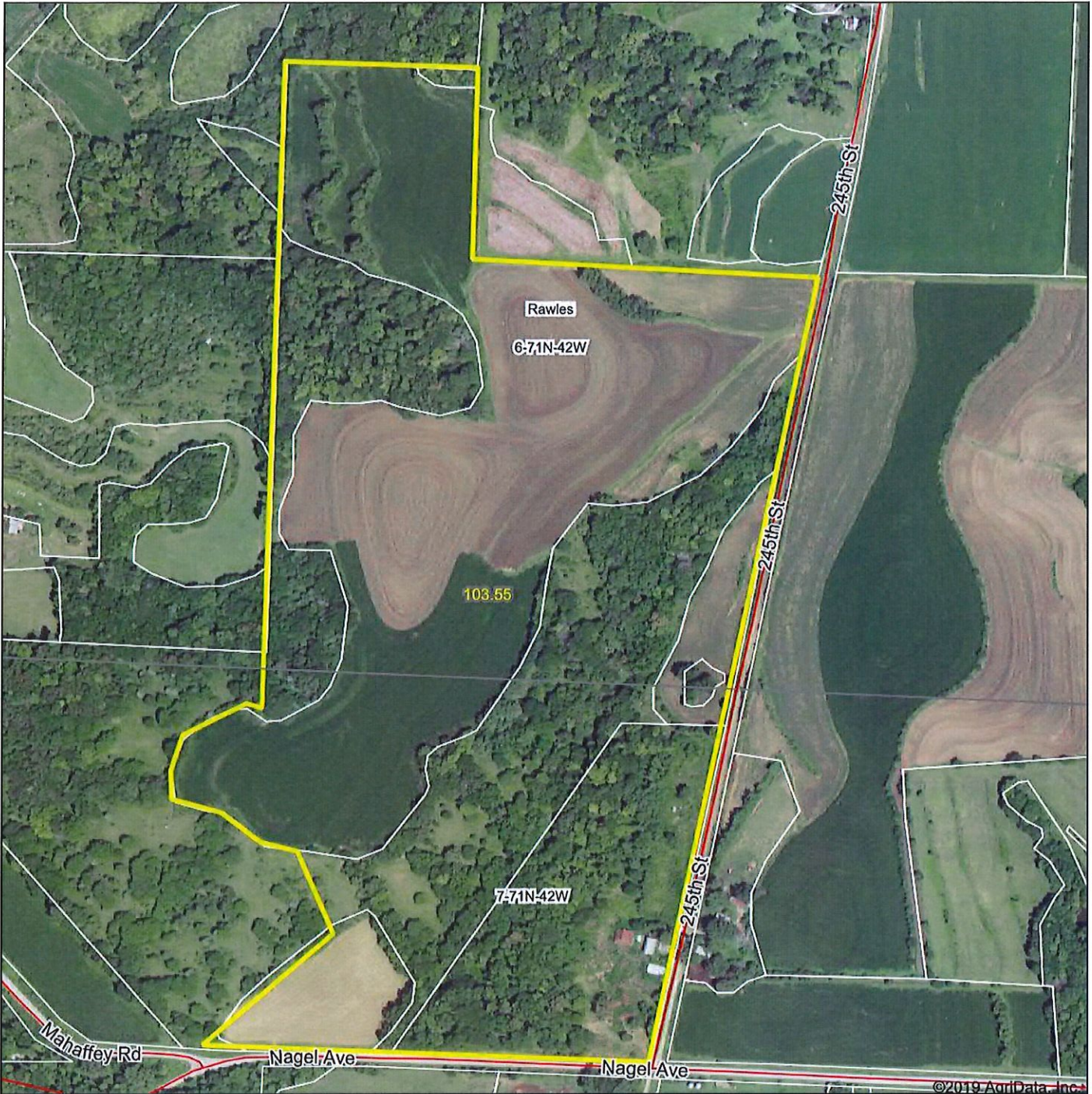
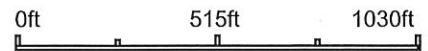


103.55 Acres
Tract 4

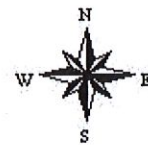
Aerial Map



Map Center: 40° 58' 29.07, -95° 43' 11.96



6-71N-42W
Mills County
Iowa



1/2/2020

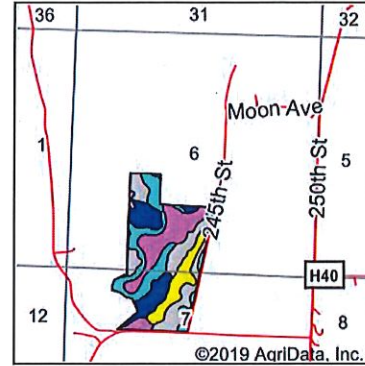
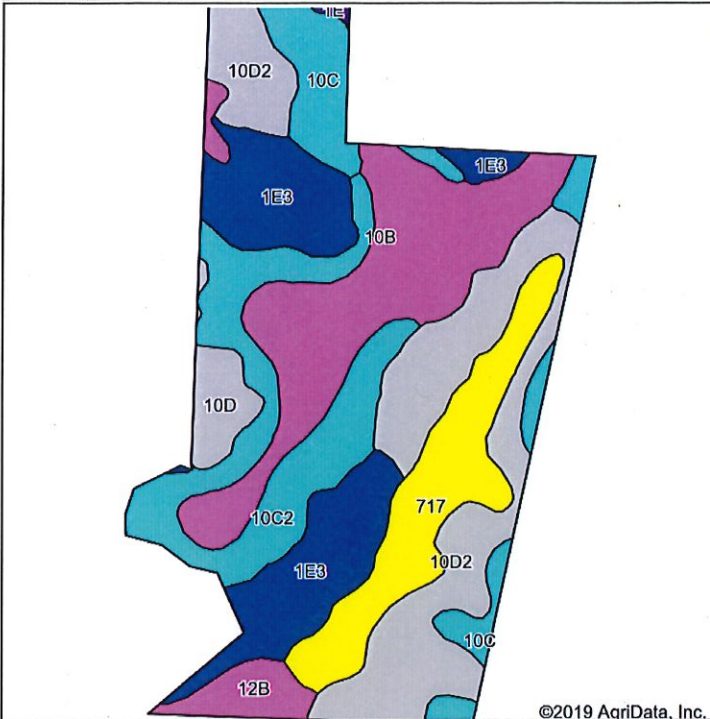
Maps Provided By:

 CUSTOMIZED ONLINE MAPPING
 © AgriData, Inc. 2019 www.AgriDataInc.com

Field borders provided by Farm Service Agency as of 5/21/2008.

Tract 4

Soils Map



State: Iowa
 County: Mills
 Location: 6-71N-42W
 Township: Rawles
 Acres: 103.55
 Date: 1/2/2020



Soils data provided by USDA and NRCS.

Area Symbol: IA129, Soil Area Version: 30

Code	Soil Description	Acres	Percent of field	CSR2 Legend	Non-Irr Class *c	Irr Class *c	CSR2**	CSR	Alfalfa hay	Caucasian bluestem	Common bermudagrass	Orchardgrass red clover	Tall fescue	Warm season grasses	*n NCCPI Overall	*n NCCPI Corn	*n NCCPI Small Grains	*n NCCPI Soybeans
10D2	Monona silt loam, 9 to 14 percent slopes, eroded	23.58	22.8%	■	IIle		60	53							71	71	52	67
10B	Monona silt loam, 2 to 5 percent slopes	19.85	19.2%	■	Ile	IIle	95	80	7	8	7	7	7	8	90	90	71	88
1E3	Ida silt loam, 14 to 20 percent slopes, severely eroded	16.81	16.2%	■	IVe		18	30							43	40	21	43
10C2	Monona silt loam, 5 to 9 percent slopes, eroded	15.98	15.4%	■	IIle		86	63							74	74	54	71
717	Napier-Gullied land complex, 2 to 10 percent slopes	11.88	11.5%	■	IIle	IVe	55	5							10	6	0	6

Soils data provided by USDA and NRCS.

Tract 4



Code	Soil Description	Acres	Percent of field	CSR2 Legend	Non-Irr Class *c	Irr Class *c	CSR2**	CSR	Alfalfa hay	Caucasian bluestem	Common bermudagrass	Orchardgrass red clover	Tall fescue	Warm season grasses	*n NCCPI Overall	*n NCCPI Corn	*n NCCPI Small Grains	*n NCCPI Soybeans
10C	Monona silt loam, 5 to 9 percent slopes	8.73	8.4%		IIIe		89	65							89	89	70	87
12B	Napier silt loam, 2 to 5 percent slopes	3.52	3.4%		Ile		93	77							87	87	69	85
10D	Monona silt loam, 9 to 14 percent slopes	2.97	2.9%		IIIe		63	55							85	85	67	81
1E	Ida silt loam, 14 to 20 percent slopes	0.23	0.2%		IVe		25	35							74	65	49	74
Weighted Average							66.9	52.3	1.3	1.5	1.3	1.3	1.3	1.5	*n 66	*n 65.1	*n 47.5	*n 63.5

**IA has updated the CSR values for each county to CSR2.
 *n: The aggregation method is "Weighted Average using major components"
 *c: Using Capabilities Class Dominant Condition Aggregation Method