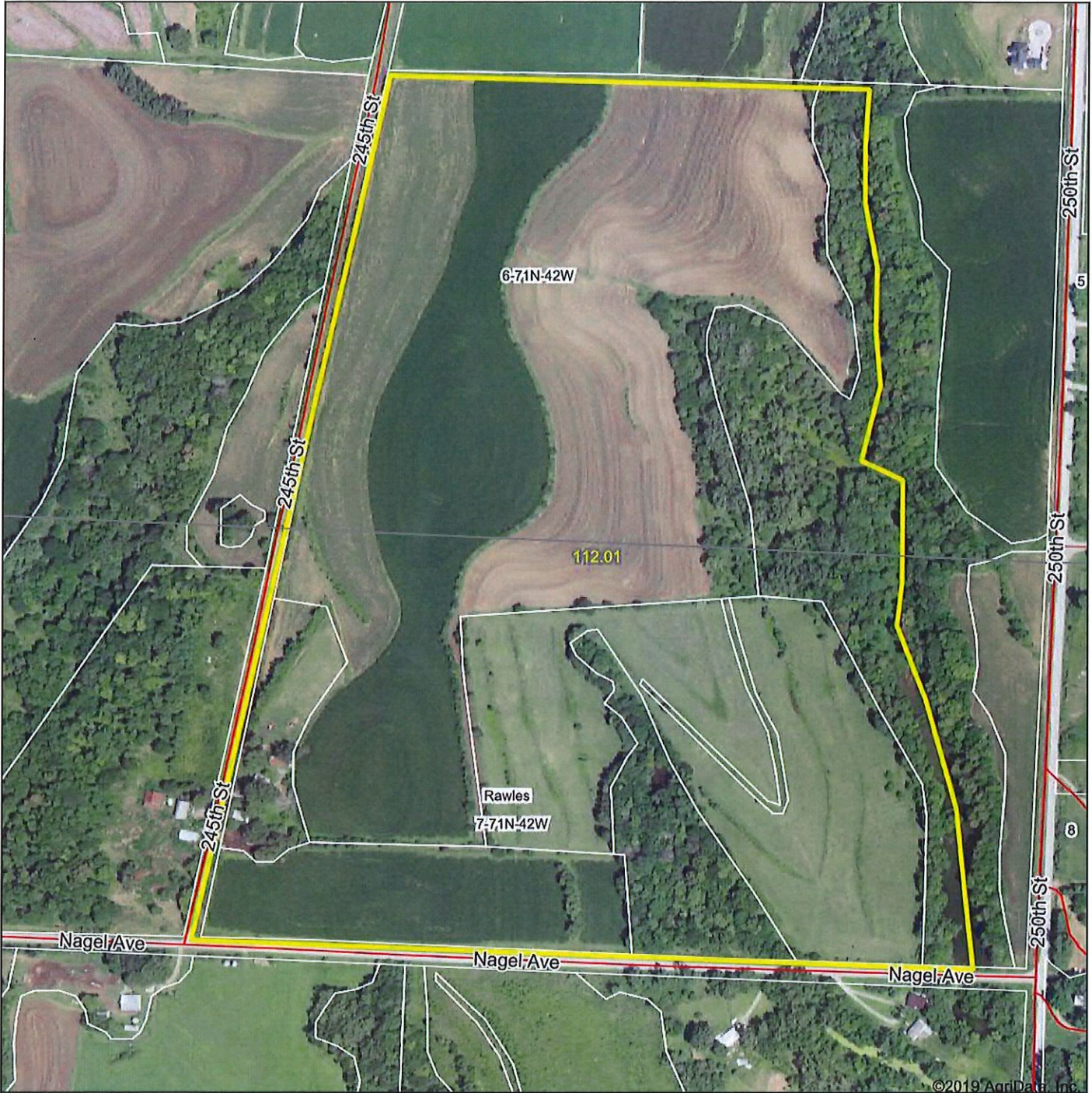
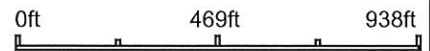


112.01 Acres
Tract 6

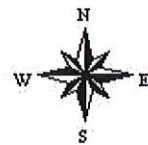
Aerial Map



Map Center: 40° 58' 24.35, -95° 42' 52.93



7-71N-42W
Mills County
Iowa



1/2/2020

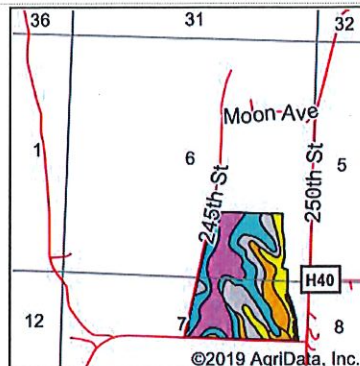
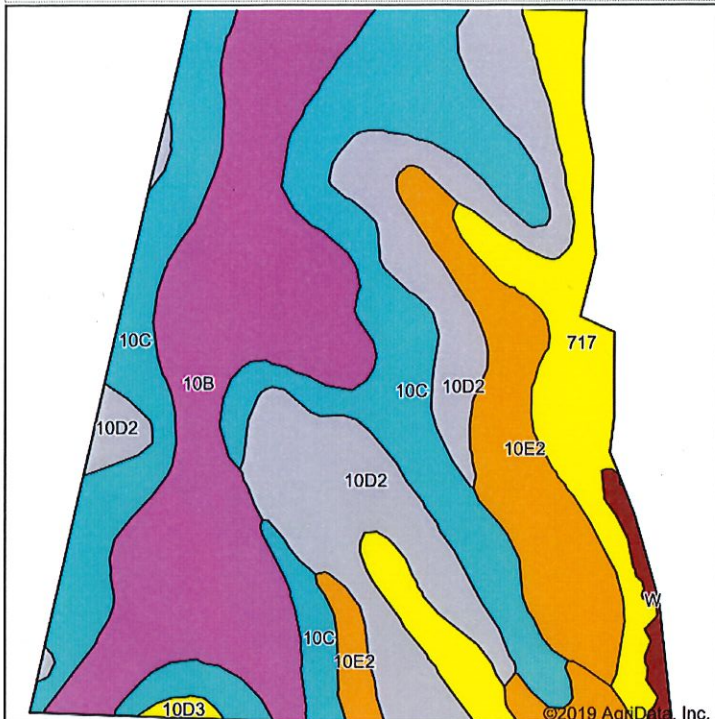
Maps Provided By:

 CUSTOMIZED ONLINE MAPPING
 © AgriData, Inc. 2019 www.AgriDataInc.com

Field borders provided by Farm Service Agency as of 5/21/2008.

Tract 6

Soils Map



State: Iowa
 County: Mills
 Location: 7-71N-42W
 Township: Rawles
 Acres: 112.01
 Date: 1/2/2020



Soils data provided by USDA and NRCS.

Area Symbol: IA129, Soil Area Version: 30

Code	Soil Description	Acres	Percent of field	CSR2 Legend	Non-Irr Class *c	Irr Class *c	CSR2**	CSR	Alfalfa hay	Caucasian bluestem	Common bermudagrass	Orchardgrass red clover	Tall fescue	Warm season grasses	*n NCCPI Overall	*n NCCPI Corn	*n NCCPI Small Grains	*n NCCPI Soybeans
10C	Monona silt loam, 5 to 9 percent slopes	32.20	28.7%		IIIe		89	65							89	89	70	87
10B	Monona silt loam, 2 to 5 percent slopes	28.39	25.3%		Ile	IIIe	95	80	7	8		7	7	8	90	90	71	88
10D2	Monona silt loam, 9 to 14 percent slopes, eroded	22.88	20.4%		IIIe		60	53							71	71	52	67
717	Napier-Gullied land complex, 2 to 10 percent slopes	13.26	11.8%		IIIe	IVe	55	5							10	6	0	6
10E2	Monona silt loam, 14 to 20 percent slopes, eroded	11.95	10.7%			IVe	45	43							66	66	45	60

Soils data provided by USDA and NRCS.

Trect 6



Code	Soil Description	Acres	Percent of field	CSR2 Legend	Non-Irr Class *c	Irr Class *c	CSR2**	CSR	Alfalfa hay	Caucasian bluestem	Common bermudagrass	Orchardgrass red clover	Tall fescue	Warm season grasses	*n NCCPI Overall	*n NCCPI Corn	*n NCCPI Small Grains	*n NCCPI Soybeans
1D	Ida silt loam, 9 to 14 percent slopes	1.63	1.5%		IIIe		41	45							81	69	55	81
W	Water	1.30	1.2%				0	0								0	0	0
10D3	Monona silt loam, 9 to 14 percent slopes, severely eroded	0.40	0.4%		IIIe		53	50							52	52	32	48
Weighted Average							74	55.8	1.8	2	1.8	1.8	1.8	2	*n 72.5	*n 71.8	*n 54.5	*n 69.5

**IA has updated the CSR values for each county to CSR2.

*n: The aggregation method is "Weighted Average using major components"

*c: Using Capabilities Class Dominant Condition Aggregation Method