

TOP QUALITY GUN & JOHN DEERE COLLECTIBLE AUCTION



LIVE AUCTION
W/INTERNET
BIDDING!

SATURDAY, MARCH 5, 2022 @ 10:00 AM

Location of Auction: AL HUGHES AUCTION FACILITY | 21929 S. 221ST ST, PACIFIC JUNCTION/GLENWOOD
Directions: 1 mile South of the Glenwood exit off Hwy 34. Signs will be posted!

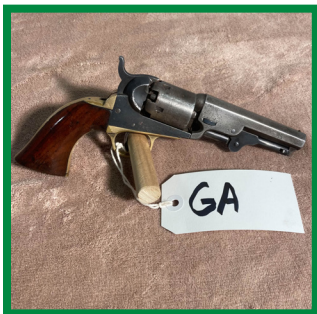


RIFLES

- WINCHESTER MOD 70 PRE 64 .257 ROBERTS - SN: 302300, REDFIELD 4X SCOPE, SCRATCHES ON BARREL
- CUSTOM BUILT 22-250 - LENARD M. BROWNELL BARREL NO. 16 SHERIDAN WYO, MAUSER ACTION LEUPOLD 7.5X SCOPE
- WINCHESTER MOD 70 - 22 HORNET, CORNELL 6X 32 SCOPE, PRE 64, LEATHER SLING, SN: 86246
- WINCHESTER MOD 70 - .220 SWIFT, REDFIELD 6X SCOPE, PRE 64, SN: 124993
- WINCHESTER MOD 70 FEATHERWEIGHT - 243, REDFIELD 6X SCOPE, PRE 64 SN: 521379
- PARKER HALE LTD - 30/06 CAL, DEERFIELD 3-9X32 SCOPE, SN: 81356
- SAVAGE MOD 14 - .204 CAL, BUSHNELL LEGEND 5X15 SCOPE, SN: G856332
- WEATHERBY MOD MARK V - .257 WEATHERBY MAGNUM, WEATHERBY 6X62 SCOPE, MADE IN W. GERMANY, SN: 43608
- CUSTOM BUILT - .243 CAL, L579 SAKO ACTION, SN: L579N047143
- WEATHERBY MARK V VARMINT MASTER - .22-250, PERMA-CENTER SCOPE, MADE IN W. GERMANY, SN: 55224
- WINCHESTER MOD 70 - 30-06 GOVT, WEAVER K-4 SCOPE, PRE 64, SN: 65735
- WINCHESTER MOD 50 - 20 GAUGE, SEMI-AUTO, FULL CHOKE, SN: 96026
- WINCHESTER MOD 74 - 22 SEMI-AUTO, 22LR ONLY, SN: 174477A, CHIP IN BUTT STOCK

HANDGUNS

- 1849 POCKET COLT - SN: 331812, 4" BARREL, 31 CAL
- 1851 COLT NAVY - SN: 198576, 7.5" BARREL, 36 CAL, W/WOODEN PRESENTATION CASE & POWDER FLASK



AMMO

- (6) BOXES WEATHERBY .257 MAGNUM
- (2) BOXES WESTERN SUPER X 220 SWIFT
- (1) BOX WESTERN 22 HORNET
- WINCHESTER SUPER W SPEED
- (10) BOXES 17 REMINGTON HIGH VELOCITY
- (6) BOXES 270 WINCHESTER
- (13) BOXES 22-250
- (4) BOXES 243
- (3) BOXES 257 ROBERTS



JOHN DEERE COLLECTIBLES

- MANY JD OIL CANS (GREEN, RED, YELLOW, BLUE)
- GREEN JD OIL PUMP CAN - PART #JD93
- JD MORRISSEY IMPLEMENT CO TICKET HOLDER - COUNCIL BLUFFS, IA
- JD PETERSEN IMPLEMENT MONEY/PENCIL BAG
- JD 4 ROW PLANTER 1/16 SCALE
- JD 6"X2" JD FARM IMPLEMENTS
- JD 9"X12" MAILBOX LORENZ IMPLEMENT - CLINTON, OK
- FEW JD BAR STOOLS
- JD 5 GAL BUCKET - SPECIAL PURPOSE OIL "303"
- JD CORN SHELLER 4216-C
- JD 4020/237 CORN PICKER - PRECISION CLASSIC 1/16 SCALE
- JD "A" /290 CULTIVATOR PRECISION CLASSIC 1/16 SCALE
- JD "A" ON STEELE PRECISION CLASSIC 1/16 SCALE
- MANY 1/16 SCALE JD TRACTORS
- JD TOY CORN PICKER/BOX
- JD 3010 DIESEL COLLECTORS EDITION
- JD 1998 1/24 SCALE #97 RACE CAR
- JD 9500 COMBINE & HEADS 1/28 SCALE

MISC. COLLECTIBLES

- (20) COLLECTIBLE POWDER FLASKS
- 12" X 10" WOLF PICTURE FACING RIGHT
- 22" X 12" HANGING OVAL PICTURE W/ DRAKE & HEN
- 16" X 20" LONE ELK FACING RIGHT
- 6" X 8" HANGING OVAL RABBIT & QUAIL
- 24" X 20" QUAIL BY FISH BOWL PICTURE
- 28" X 16" HANGING RABBIT & QUAIL PICTURE
- WINCHESTER BELT BUCKLES
- MANY 1/16 JD TRACTORS/TOYS
- MANY WINCHESTER HARD BACK BOOKS
- MANY SMALL JD ADVERTISEMENT FROM LOCAL DEALERSHIPS
- MULTIPLE GUN CLEANING KITS

TOY PEDAL TRACTORS

- JD PEDAL TRACTOR
- JD PEDAL TRACTOR 10 SERIES
- JD PEDAL TRACTOR
- JD PEDAL TRACTOR - ERTL MOD#520
- JD PEDAL TRACTOR - ERTL 7410
- JD PEDAL TRACOTR - ERTL MFG CO. MOD D-65, 20 SERIES
- JD 2-WHEEL WAGON
- JD 2-WHEEL WAGON/FENDERS, 1 WHEEL SEPARATING



JOHN DEERE COLLECTIBLES

- 4-LEGGED JD CLOCK
- JD WALL CLOCK (SCRATCHES ON BOTTOM OF CLOCK)
- JD 4-LEGGED DEER MULTI LUBER METAL CAN
- PETERSON IMPLEMENT CO JD THERMOMETER
- JD CENTURY SIGN 22" X 18" - METAL TIN SIGN W/ BARN WOOD FRAME
- JD FARM ACCOUNT BOOK ISSUED BY JD
- JD TOY POSTER FRAMED 41" TALL, 28" WIDE
- JD PLASTIC NASCAR HOOD - 28" X 28", CHAD LITTLE AUTOGRAPH
- JD METAL DEER DESIGN - 39"L X 31"T X 1.5"
- JD (3) QUALITY FARM IMPLEMENTS TIN SIGN 26L X 10
- JD DEERE CROSSING METAL SIGN 36" X 6"
- JD GUM BALL MACHINE "5C" W/ KEY
- JD 1847 CAST IRON SEAT
- JD SHOT GLASS - GEORGE E. PAWLIUK & SON
- (3) JD TRACTOR TINS
- JD SEE WHATS NEW IN THE LONG GREEN LINE FORM #592
- JD PAY PHONE
- JD LAMP PLASTIC SHADE
- MORRISSEY & PETERSON IMPLEMENT CO RED FLAG
- ROCK LAKE IMPLEMENT CO THERMOMETER
- CLAIR D WORLEY BOLT GAUGE
- JD BANK TIN BARREL 2" X 3.5"
- WALL IMPLEMENT - (6) COASTERS
- JD ASH TRAY DUDLEY IMPLEMENT - LAURENS, IA
- JD 4WD TRACTOR - STAMPED ERTL CO.
- IVAN HESS OLIVER-FERGUSON THERMOMETER
- JD 8970 4X4 METAL TRACTOR
- JD 5020 DIESEL/BOX
- JD 8400T TRACTOR/BOX
- JD 8560 4X4 METAL
- JD 6600 COMBINE

AUCTIONEER'S NOTE: High quality gun and JD collectible auction. The guns are in great shape for their vintage. The JD collection is unique and will bring in buyers from miles away! See you at the auction. Online items will start at 11 am.

TERMS: All forms of payment must be confirmed prior to removal. Cash, check, or credit card day of sale with proper ID. 4% buyer's premium if using a credit card. Checks on day of sale must be accompanied by an irrevocable bank letter of credit. Nothing removed until settled for. All equipment will be sold "as is, where is" condition. Announcements days of sale take precedence over all previously printed advertising. Not responsible for accidents.

SELLER: THE LATE RICHARD TORNETEN & MARK TORNETEN

AUCTIONEER: AL HUGHES

402-672-3621

FACILITIES MGR: MIKE RANDERIS

402-680-8327

OFFICE: 712-527-3114



GUN BUYERS: Proof of permit to purchase or permit to carry to remove guns from auction. Out of state buyers will need to use an FFL dealer in your state to transfer guns.

VISIT WEB @ WWW.ALHUGHESAUCTION.COM